



HAPPY HANUKKAH



For unto you  
is born this day  
in the city of David  
a Savior,  
who is Christ the Lord



## McKenzie Place Condominium



2500 Kenzie Drive  
Pittsburgh, PA 15205  
Phone & FAX  
(412) 787-7104

Board Of Directors  
Angela Austin, President  
johnnie55@verizon.net

John Austin, Treasurer

Jan Lentini, Secretary  
jwl7503@juno.com

Nicole Gardner  
nicolepsu@gmail.com

Design Committee  
Marilyn Ross  
Jamie Tortis  
Carey Bird

[www.mckenzieplace.com](http://www.mckenzieplace.com)

Property Management at  
McKenzie Place:

Elite Mgmt Services Group  
138 McDonald St., Ste 200  
McDonald, PA 15057  
(724) 926-3093  
FAX (724) 926-3090  
JakElite@aol.com

Debbie Brisky  
Property Manager

## Happy Holidays to our Neighbors

*Christmases are like snowflakes;*

*Each one is unique.*

*May this holiday season be a memorable one.*

*May the new year find you happy and surrounded  
by the love of family and friends.*

## 2012 Activities at McKenzie Place

Included with your Holiday Newsletter is a calendar with 2012 activities that will be helpful in reminding us all when inspections are due, start of some maintenance activities, and planned improvements during the upcoming year. Dates for work being done by contractors may not be exact, and if the dates are dramatically different they will be updated at [www.mckenzieplace.com](http://www.mckenzieplace.com).

*Have a safe and happy holiday.*

**Important Notice:** The McKenzie Place Newsletter is an official publication of the Association. All information contained within the newsletter is a legal form of communication from the board of directors to the unit owners.

**FROM THE DESK OF:**

**McKenzie Place Maintenance**



**Christmas Trees after Christmas**

Maintenance will dispose of your live — or, we should say, used-to-be-live Christmas tree. Do not drag them through the hallways. If you are on a second floor, with care, drop them off of your porch. Maintenance will haul them away after the first week of January.

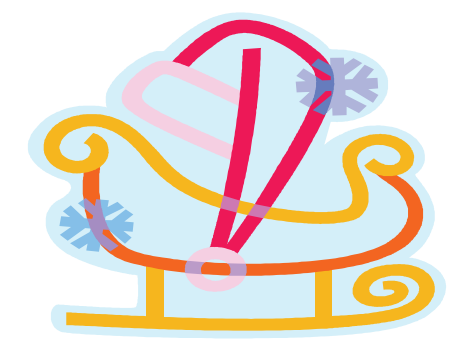


**Here Comes the Snow!**

McKenzie Place follows the 2" rule for snow removal and winter road maintenance.

Depending on the nature of in-climate weather we might be expecting, some road pre-treatment may occur.

*Photos from December's Clubhouse Annual Decorating Party earlier this month!*



**Important Notice:** The McKenzie Place Newsletter is an official publication of the Association. All information contained within the newsletter is a legal form of communication from the board of directors to the unit owners.